

## **Library Committee Meeting**

Date: Wednesday 12:15pm, March 14<sup>th</sup>, 2017

Location: L224

### **Faculty Representatives** (Name, Department, Term Ends)

1. Larisa Honey, Social Sciences (2019)
2. Agnieszka Tuszynska, English (2019)- secretary
3. Joanne Chang, Music (2018) - Chairperson
4. James Timbilla, Biological Sciences & Geology (2018)
5. Danny, Mangra, Engineering Technology (2020)
6. Bia Wang, Mathematics & Computer Science (2020)

### **Student Representatives**

WooChul Kim

#### **Liaisons**

Jankowski, Jeffery, Social Sciences, COC Liaison

Sujun Wei, Chemistry, Steering Committee Designee

Jeanne Galvin, Library, President's Liaison

---

### **Agenda**

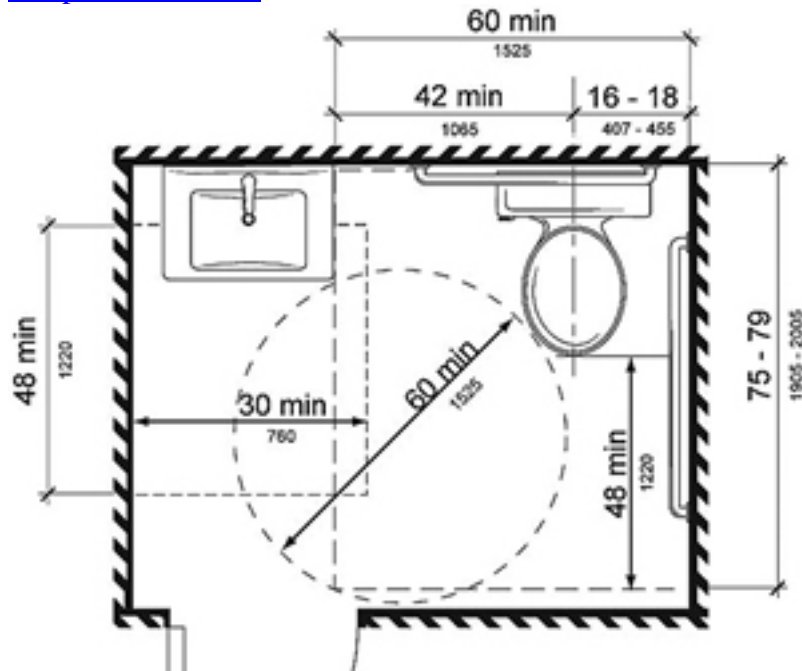
1. Minutes from November 2017 meeting to be approved
2. Follow up the disability bathroom conversion with B&G in Fall 2017 and others.  
(See photos, ideas and ADA standards in the next pages)

“Accessibility of bathrooms in the library was discussed. The request for review was made by Joanne Chang from the Library Committee. Bathrooms must be handicap accessible but QCC must also comply with the number of bathrooms available. There are accessible bathrooms at present, but not on every floor. Funding is not currently available for additional conversions. At present, bathrooms in the basement are accessible. The committee will follow up on future plans.”

3. Project ‘Fitness while Studying’, Pamphlet content and inquiry with Attorney in law of QCC, Dr. Florman. (See attached file in email and sample copy passed in the meeting)  
Phamplet:  
Meditation pamphlets contents, key words for search on Youtube  
Youtube list of weblinks on the computer
4. Library 3rd floor quiet space use and regulations

## Library Access for Disability and Wheel-chaired

1. Entry from first floor backdoor with the ramp only. The front door of the library building has steps.
2. There's two sets of elevators in the library building: Front without the key, Back with the key
3. The front elevator cannot be access from the first floor due to the stairs and it only goes to basement and 2<sup>nd</sup> floor.
4. The back elevator which requires keys, can go down to basement for disability bathroom which is the only one accessible for wheel chaired library users.
5. The first, second and third floor bathroom are not wheel-chaired accessible.
6. We may create a ramp to connect 2<sup>nd</sup> floor library and 2<sup>nd</sup> floor administration building for wheel-chaired accessibilities, so they don't have to go down to the backdoor of the first floor library, wheel to Administration building and take the elevator to the 2<sup>nd</sup> floor. The two ramps from the outdoor 2<sup>nd</sup> floors of Library and Administration buildings will connect the path and make it much easier for wheel-chaired ones in case of bad weather and time constrain.
7. Show photos of possible bathroom conversions based on the basement floor (This may not work)
8. <https://www.buildings.com/article-details/articleid/9242/title/the-ada-compliant-restroom>



According to the 2010 update to ADAAG, the basic guidelines for a single-user restroom are:

- 30-inch by 48-inch access to the sink (the door can't swing into this rectangle). The measurement starts from the point where a person has 9-inch vertical clearance for their feet and 27-inch vertical clearance for their knees.
- The center line of the toilet must be between 16 and 18 inches from the side wall.
- A clear circle of at least 60 inches around the side wall and 56 inches from the rear wall to allow a wheelchair to turn (the door cannot swing into the minimum required area for wheelchair-accessible toilet compartments).
- A toilet seat height of 17-19 inches.